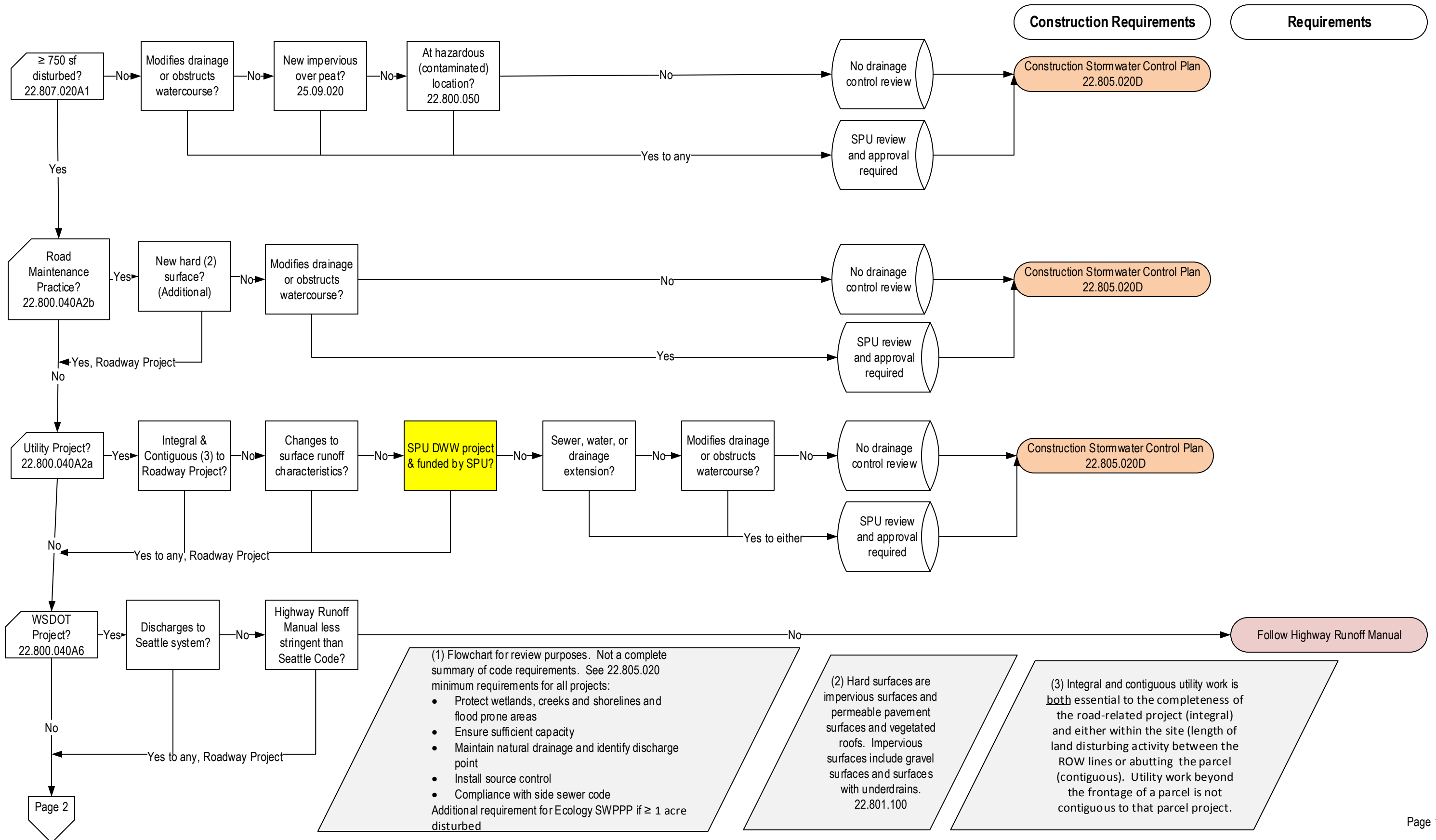


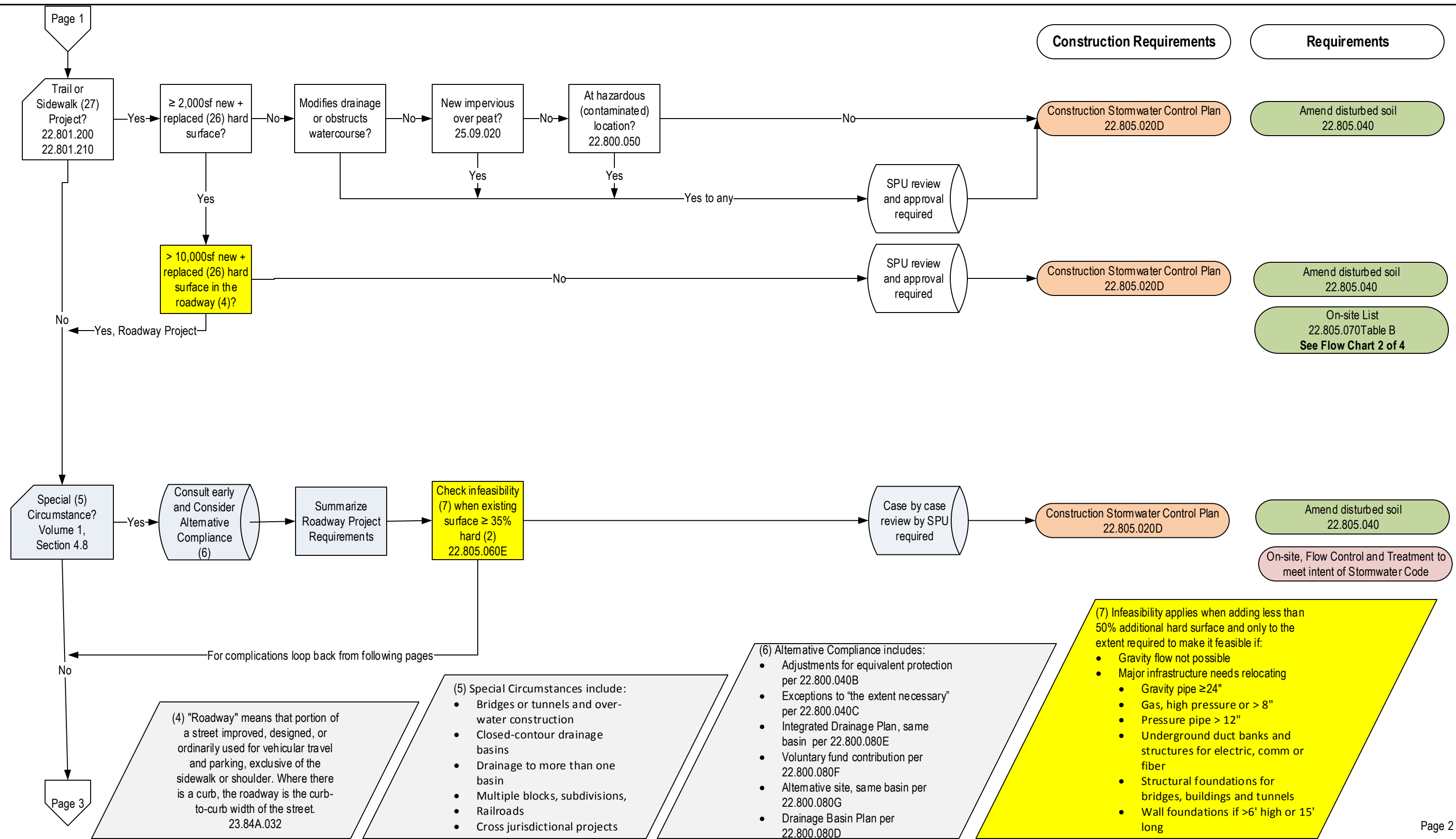
Seattle Stormwater Code Flowchart (1) for projects in the ROW, v. 1.2

2016 Code
Chart 1 of 4



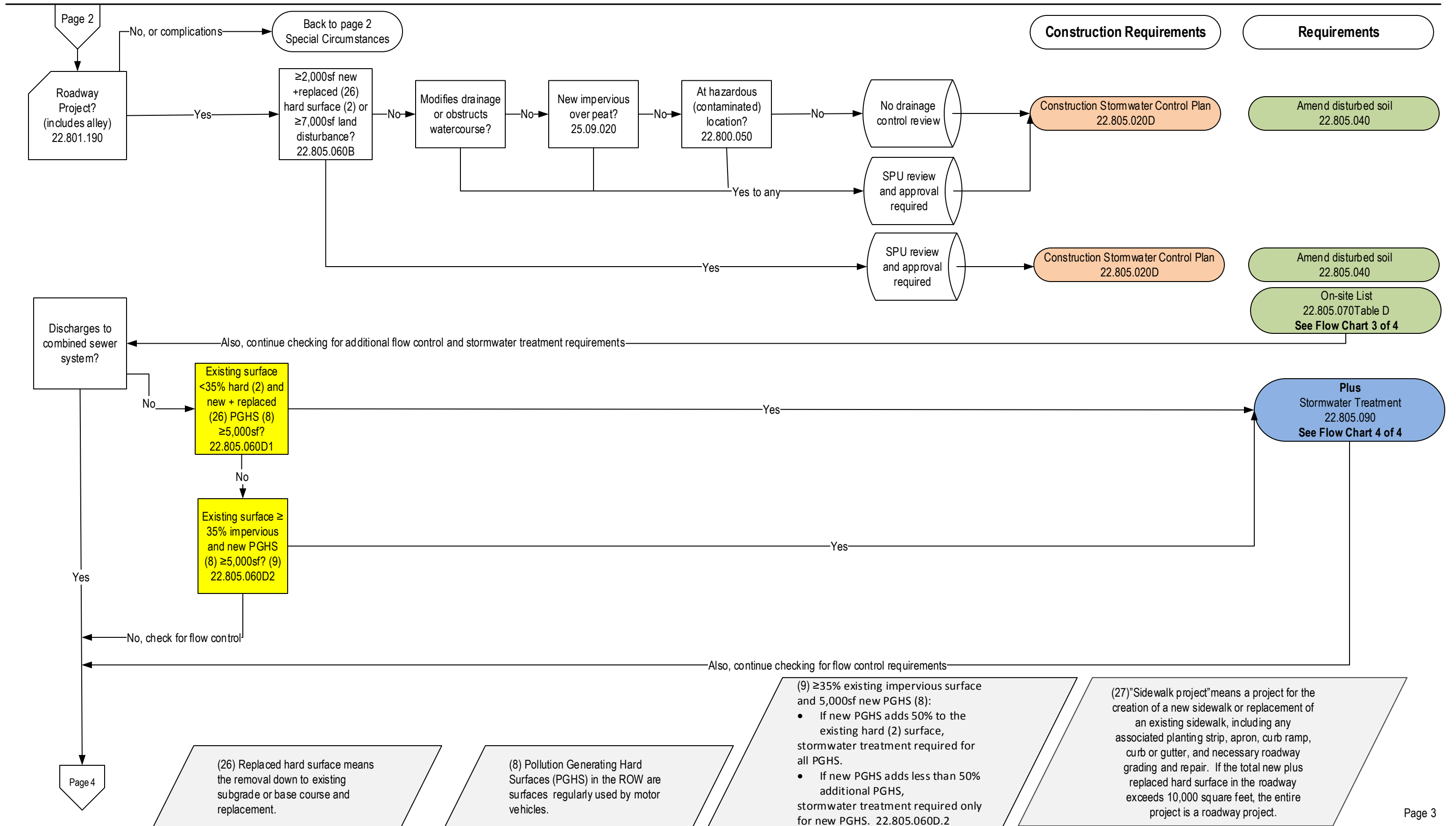
Seattle Stormwater Code Flowchart (1) for projects in the ROW, v. 1.2

2016 Code
Chart 1 of 4



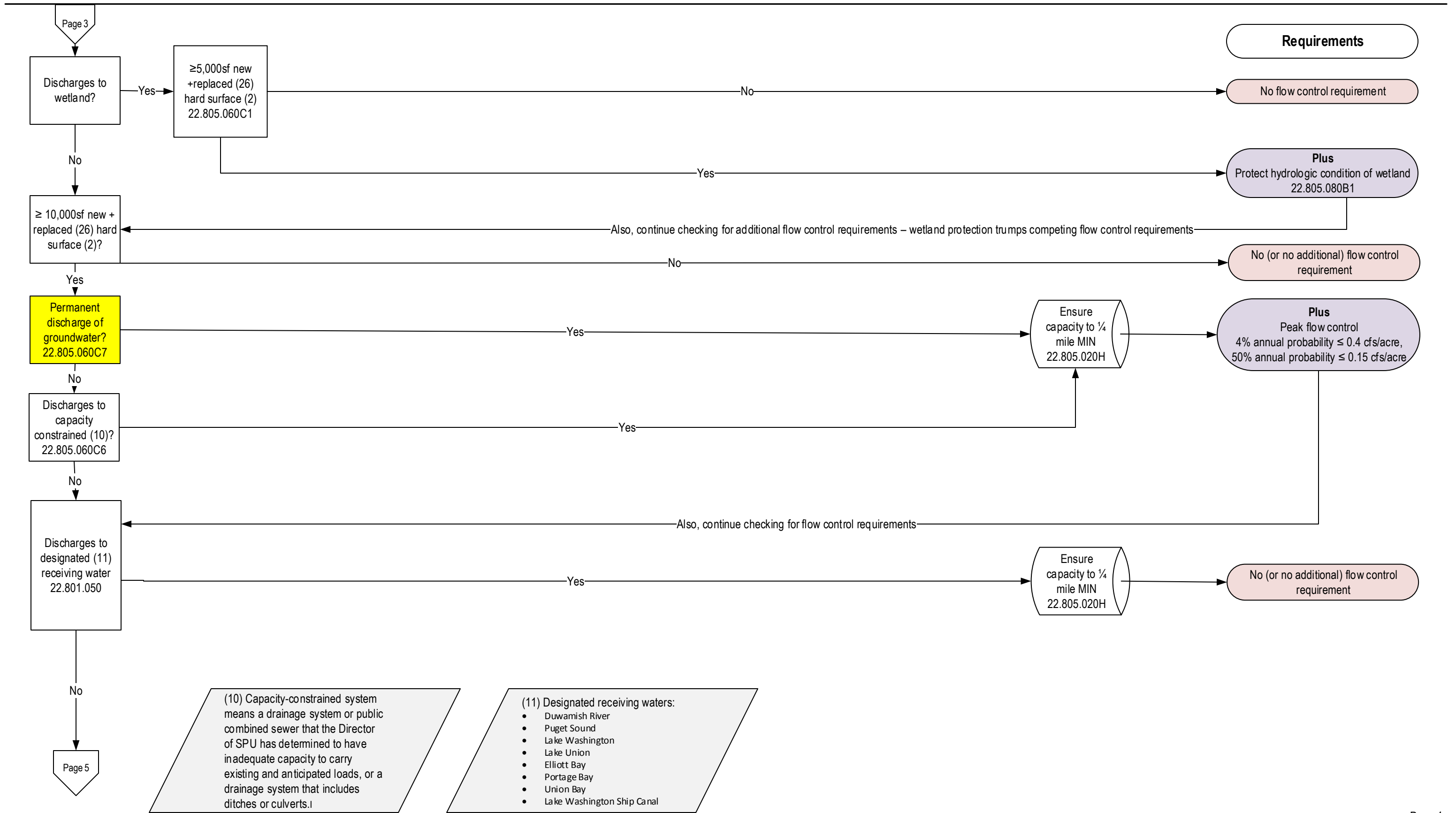
Seattle Stormwater Code Flowchart (1) for projects in the ROW, v.1.2

2016 Code
Chart 1 of 4



Seattle Stormwater Code Flowchart (1) for projects in the ROW, v. 1.2

2016 Code
Chart 1 of 4

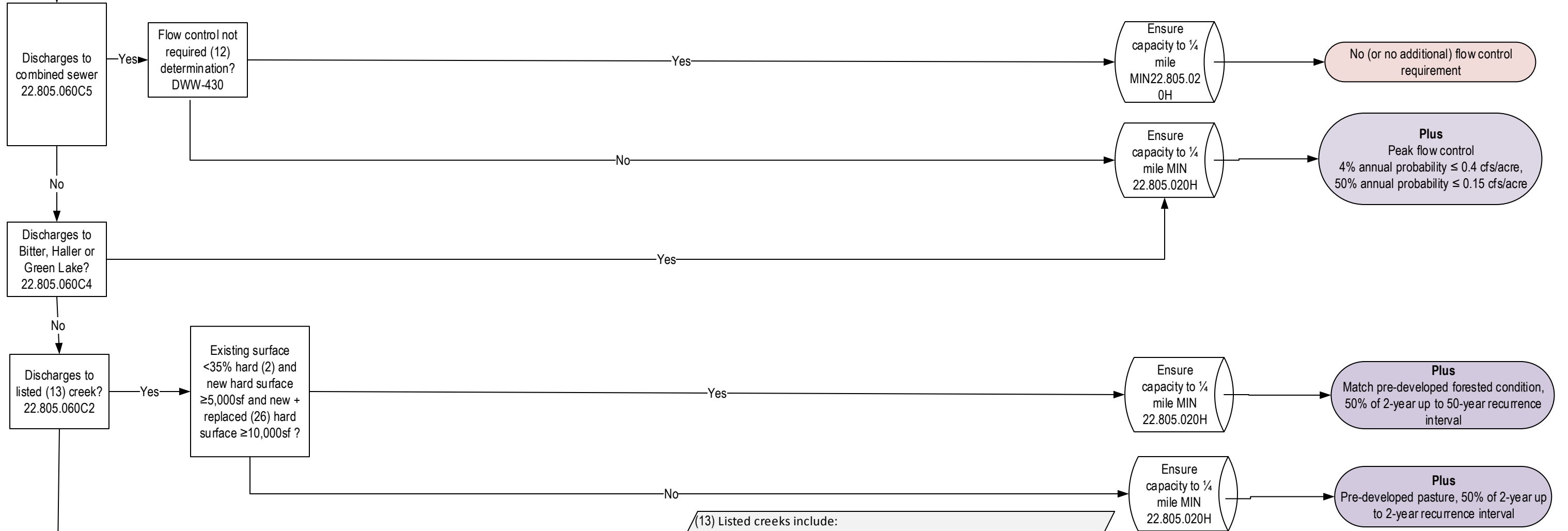


Seattle Stormwater Code Flowchart (1) for projects in the ROW, v. 1.2

2016 Code
Chart 1 of 4

Page 4

Requirements



(12) Check Director's Rule DWW-430. Waterfront/SODO currently mapped as peak flow control not required. August 2015.

- (13) Listed creeks include:
- Blue Ridge Creek
 - Broadview Creek
 - Discovery Park Creek
 - Durham Creek
 - Frink Creek
 - Golden Gardens Creek
 - Kiwanis Ravine/Wolfe Creek
 - Licton Springs Creek
 - Madrona Park Creek
 - Mee-Kwa-Mooks Creek
 - Mount Baker Park Creek
 - Puget Creek
 - Riverview Creek
 - Schmitz Creek
 - Taylor Creek
 - Washington Park Creek
- All other creeks are "non-listed".

Page 6

Seattle Stormwater Code Flowchart (1) for projects in the ROW, v. 1.2

2016 Code
Chart 1 of 4

