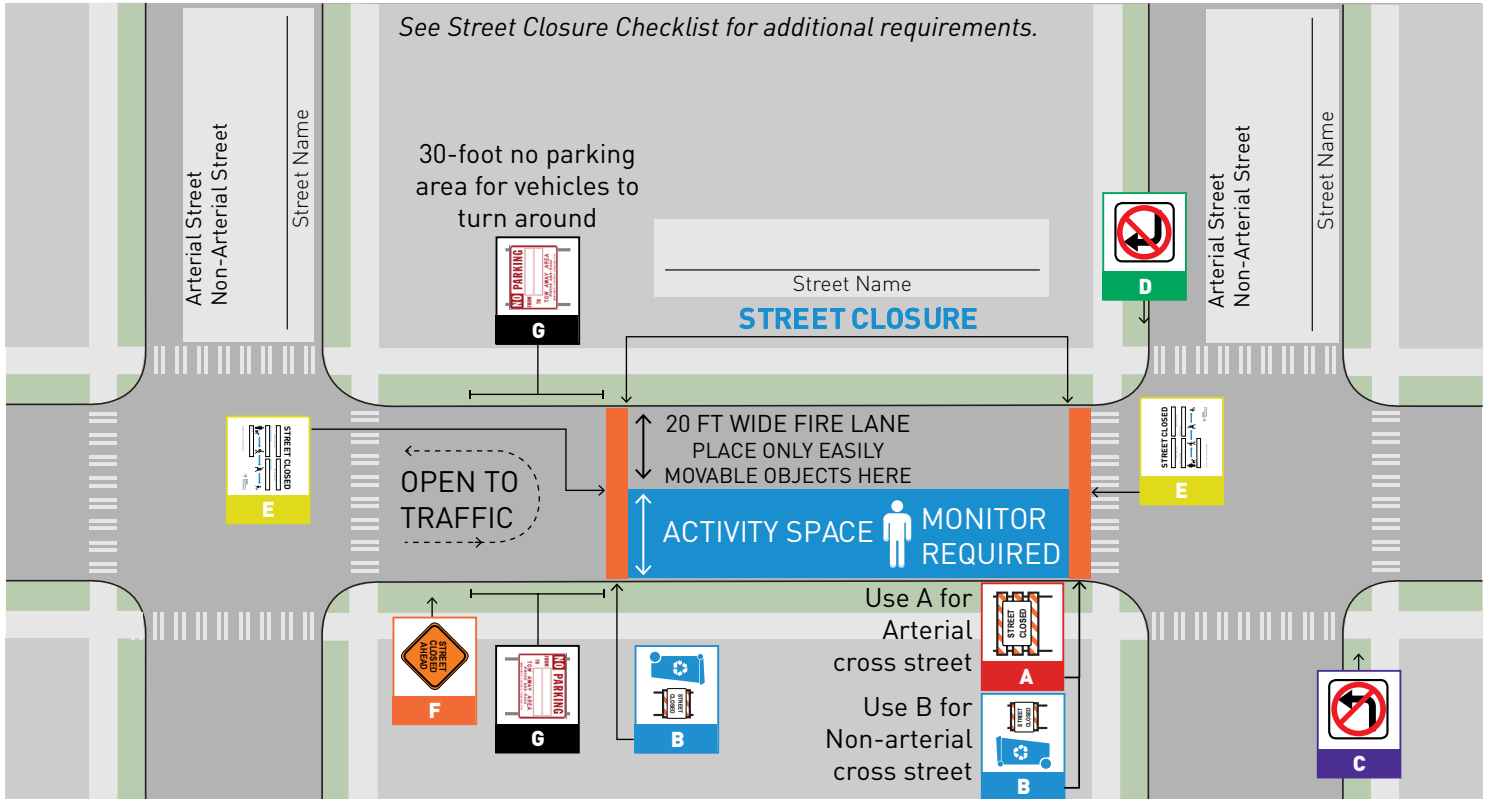


# PARTIAL STREET CLOSURE TEMPLATE



**Use Type III barricades at arterial cross streets**

4 feet min.  
Variable max.  
5 feet min.

**STREET CLOSED**  
R11-2  
3 feet x 2 feet

**Type III Barricade**  
Street closed sign mounted to a Type III barricade

**A**

**Use Type II barricades at non-arterial cross streets**

2 feet min.  
3 feet min.

**STREET CLOSED**  
R11-2  
3 feet x 2 feet

**Type II Barricade**  
Street closed sign mounted to a Type II barricade or  
garbage / recycling bin

**B**

**No Left / Right Turn Sign**  
Must be used to help guide traffic at an arterial intersection

R3 - 2  
2 feet x 2 feet

R3 - 1  
2 feet x 2 feet

**C**

**D**

**Informational Sign**  
Must be placed in the middle of the center of the street at the ends of the block

**STREET CLOSED**

Sanity Department of Transportation

**E**

**Street Closed Ahead Sign**  
Required for arterial streets

W20 - 3  
30 inches - 36 inches

**F**

**No Parking Signs**  
Recommended for closures adjacent to non-arterial streets and required for street closures adjacent arterial streets.

R7 - T39  
3 feet x 2 feet

**G**