

Standing Advisory Committee UWMC Northwest Campus

NOVEMBER 3, 2022



Standing Advisory Committee - Agenda

- Annual MIMP Report
- Behavioral Health Teaching Facility Update
- MIMP Update and CAC Formation
- Committee Questions/Discussion
- Adjourn



UWMC Northwest Annual MIMP Report

- No material updates to report.
- UWMC Northwest continues to focus on meeting the MIMP's Transportation Management Plan (TMP).
 - TMP Single Occupancy Rate (SOV) remains at 75.4% as there is no new survey data for this reporting period. The last survey was conducted in 2019. The Seattle Commute Survey occurs every two years but was delayed due to the pandemic. The new survey was just launched in October and concludes in November (2022).
 - Upon receipt of the updated survey results, the TMP work group will determine any updated strategies necessary for reducing the SOV.
- Charity Care for UWMC (Northwest and Montlake combined) totaled **\$40,338,054** for the fiscal year ending June, 2021.
- Major Institutional Development: Construction is underway for a 150-bed Behavioral Health Teaching Facility on the Northwest campus that will meet the conditions of the existing Major Institution Master Plan.



Behavioral Health Teaching Facility Project Update

—

“...EDUCATING A NEW GENERATION OF INDIVIDUALS WHO WILL INVEST THEIR HEARTS, LIVES AND CAREERS INTO THOSE WHO ARE HURTING, HELPING THEM REGAIN HOPE FOR THEIR FUTURES.”

BHTF Construction Update

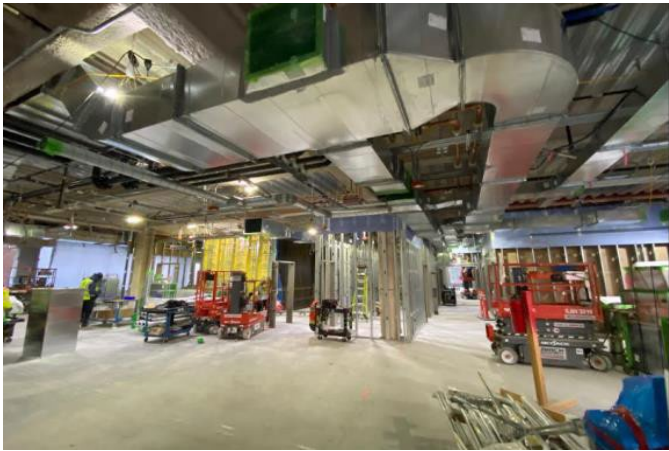


Current Progress:

- Framing, mechanical, electrical, and plumbing rough-in is progressing.
- Most of the mechanical equipment has been installed in the penthouse.
- Building envelope is anticipated to be dried in by the end of November.
- Revisions to loop road underway.



BHTF Construction Update



BHTF Construction Update

- Original schedule estimated September 2023 completion
- Nearly 5 month (140-day) concrete driver strike
- Revised schedule now estimates construction substantial completion by January 31, 2024
- Phase opening beginning June, 2024



Major Institution Master Plan Update



Why Update the UWMC-Northwest MIMP?

- First opened in 1960 with expansion in 1970s, 1980s, early 2000s.
- Existing MIMP is from 1991.
- Building of the Behavioral Health Teaching Facility utilized the remaining space allocated in the 1991 MIMP.
- MIMP needed on UWMC Northwest campus to support growth for the next 20 years.





Intent of Major Institution Master Plans

(SMC 23.69.025)

The intent of the Major Institution Master Plan shall be to balance the needs of the Major Institutions to develop facilities for the provision of health care or educational services with the need to minimize the impact of Major Institution development on surrounding neighborhoods.



Required Elements of the Master Plan

1. Development Standards

- Allows for institution-sized buildings, uses, campus configuration (vs. underlying residential zoning), maximum square footage
- Structure setbacks, height limits, lot coverage, landscaping, open space, pedestrian/bicycle/vehicle circulation

2. Development Program

- Development pattern, existing and planned physical development, public and private street layout, parking areas and structures, etc.
- Purpose of the development proposed, including the public benefits resulting from the development and the way in which the development will serve the public purpose mission of the Major Institution.

3. Transportation Management Program

- Existing and planned parking, loading and service facilities
- Bicycle, pedestrian and traffic circulation and relationship to external street system
- Programs to reduce traffic impacts and to encourage the use of public transit, carpools, vanpools, etc.



Must Change the Advisory Committee Type

(SMC 23.49)

- Dissolve the Standing Advisory Committee (SAC)
- Form a Citizen Advisory Committee (CAC)



CAC and SAC Comparison

CAC

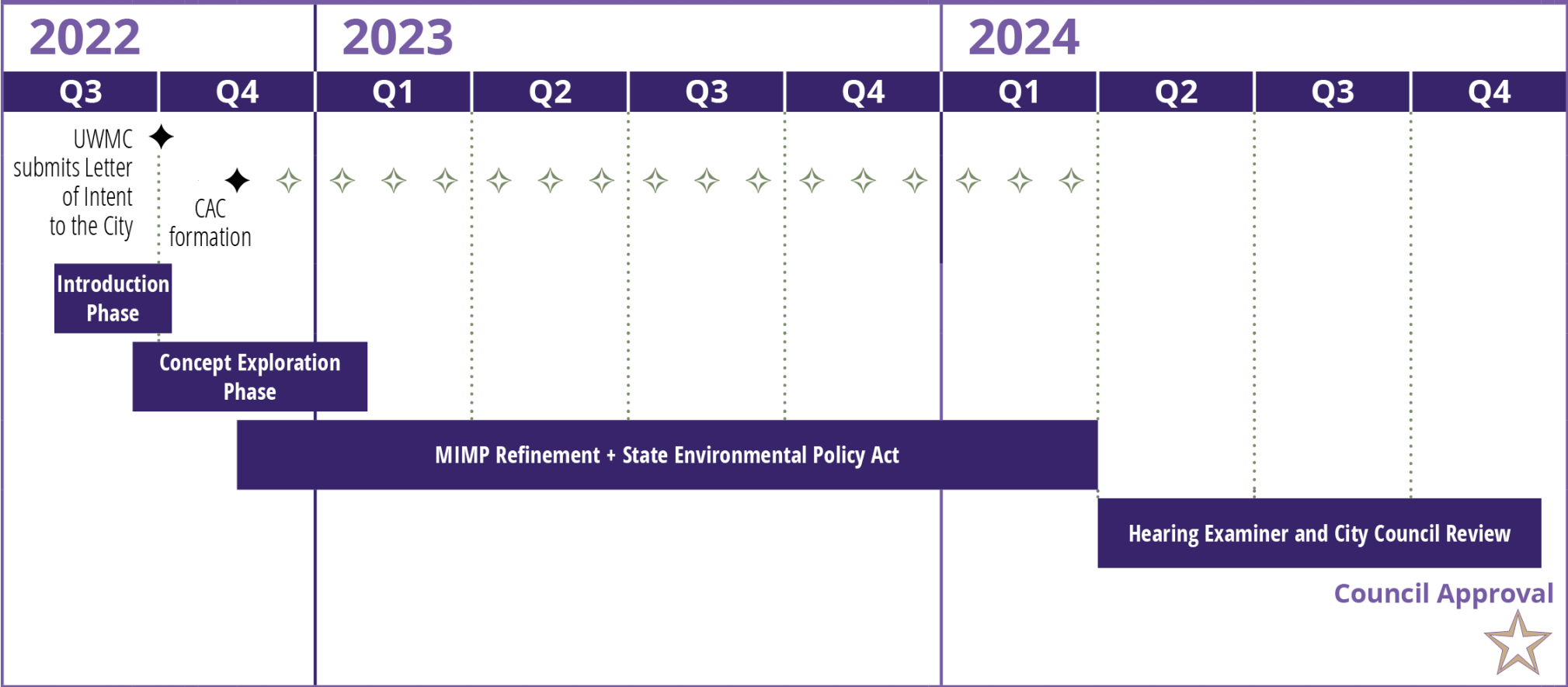
- Formed as part of the process of preparing a master plan.
- The City Council officially appoints the CAC.
- The CAC may recommend changes to the plan or possible mitigation of impacts to maintain the health and livability of the surrounding communities.
- Duration of approx. 2 years

SAC

- Appointed by the Department of Neighborhoods Director
- Monitor compliance with the provisions of the adopted master plan.
- Meets as needed, but no less than annually.



Estimated Schedule



◆ Regular CAC meetings



CAC Deliverables

1. Comment on Concept Plan
2. Comment on EIS Scope
3. Development of the Master Plan
4. Comment on Preliminary Draft Master Plan
5. Comment on Preliminary Draft EIS
6. Draft Advisory Committee Report
7. Comment on the Draft (SDCI) Director's Report
8. Final Advisory Committee Report
9. Comment on the Final (SDCI) Director's Report

(EIS = Environmental Impact Statement)



Questions / Discussion