

**CALIFORNIA PL.**

4,220 sq. ft.  
 lawn, 11 trees, sidewalks  
 Deed 1910 J.F. Ernenwein  
 Secy. Bass Lumber Co.  
 Bkpr. Atlas Lumber & Shingle Co.  
 + Street Vac. 1960  
 Maint. by church - Permit 1961  
 (West Seattle Congregational)

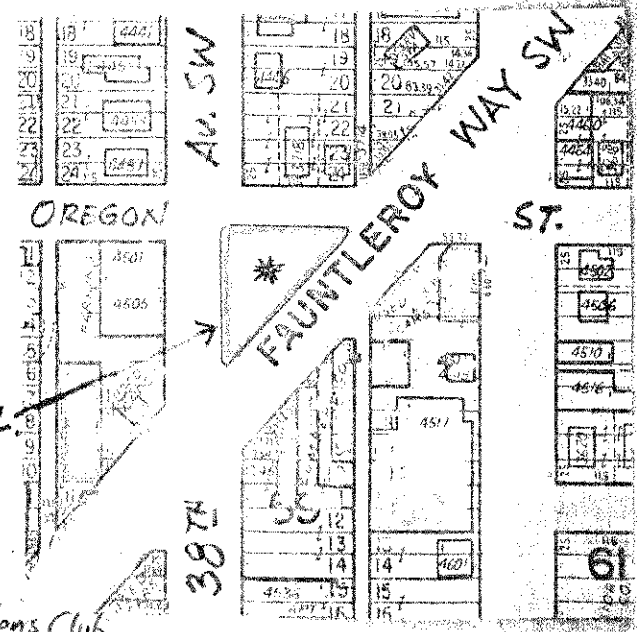


Ferry Av. so named because it was [1899 map of West Seattle] the route of the cable car from the turntable (1890-1900?) terminus north of (46th Av.) and (Admiral Way) down to the Ferry Slip at (Atlantic St.). (West Seattle Ferry docked at foot of Marion St.) Cable car continued up (California Way) wending its way to (45th) and (Ferry Av.) to turntable.  
 (1902)? A later day "Electric RR" made the Ferry obsolete: came from (Spokane St.) up (Fairmount Av.) curving upward until it terminated here at (California Av.) + (Ferry Av.).

Fautleroy named from adjacent street which was the old road to the Fautleroy community - a name given to that area by Lt. Geo. Davidson to honor the family of his fiancé.

**FAUNTLEROY PL.**

3,370 sq. ft.  
 lawn, pine tree  
 Transf. jurisd. 1930  
 Improv. by W. Seattle Lions Club  
 (1930 letter)



**CALIFORNIA PL.**  
**FAUNTLEROY PL.**